

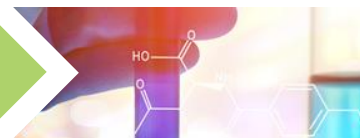
- SECTION 12 -

Quick Price List

Only looking for basic course information, including pricing? Download our Quick Price List.



■ Quick Price List



*****THIS PAGE INTENTIONALLY LEFT BLANK*****



Continuing Education Unlimited

6231 PGA Blvd, Suite 104 / #306 / Palm Beach Gardens, FL 33418
 Phone: 888-423-8462 / Fax: 561-775-4933 / Web: www.4CEUINC.com / Email: Lab@4ceuinc.com

LAB CEU - QUICK PRICE LIST

NOTE | This list does not reflect Sales or Group Discounts. Last Updated: Nov. 26, 2019

COURSE FORMAT LEGEND - Used for Courses Below				
O	Online Complete	You get both course material and quiz ONLINE		
OQ	Online Quiz Only	You only get access to the ONLINE quiz. You already have the reading material.		
B	Book Only	You get a PRINTED BOOK mailed to you. Pair with an Online Quiz, Answer Sheet or Online Complete.		
AS	Answer Sheet Only	You print your AS from your online profile. Quizzes can also be completed online.		

SUBSCRIPTION: [Catalog Section 4](#)

FORMAT	CODE	TITLE	HRS	COST
O	O-SUB19 *	Comprehensive Lab Subscription (Access to all INDIVIDUAL course titles)	N/A	\$85 for 12 months **

*Last 2 digits of course code change to match the calendar year | DOES NOT include Packages or Combo Titles | ** Groups get 24 months of access

COMBO COURSES:

FORMAT	CODE	TITLE	HRS	COST
LABORATORY COMBOS Catalog Section 7				
B	B-24-19	Laboratory Combo-19 - PRINTED BOOK ONLY (390 Black & White pages)	N/A	\$47 + SH
O, OQ, AS	24-19	Laboratory Combo-19 (Both PARTS I and II)	24.5	O-\$75 / OQ-\$38 / AS-\$45
O, OQ	24-19-I	Laboratory Combo-19 PART I	12.5	O-\$44 / OQ-\$23.50
O, OQ	24-19-II	Laboratory Combo-19 PART II	12	O-\$44 / OQ-\$23.50
O, OQ	H24-19	Histology Combo-19 (Both PARTS I and II) (Lab Combo PART I + Histo Combo PART II)	24.5	O-\$75 / OQ-\$38 / AS-\$45
O, OQ	H24-19-II	Histology Combo-19 PART II (Pair with the Laboratory Combo PART I for 24.5 hours)	12	O-\$44 / OQ-\$23.50
O, OQ	---	All 2017 Combo Courses are still available, but not listed due to space constraints.	--	See Pricing Above

FLORIDA COMBOS & PACKAGES Catalog Section 6				
B	B-24F-19	Florida Laboratory Combo-19 - PRINTED BOOK ONLY (390 Black & White pages)	N/A	\$47 + SH + Tax
O, OQ, AS	24F-19	Florida Laboratory Combo-19 (Both PARTS I and II) (Package for Florida Licensees)	24.5	O-\$75 / OQ-\$38 / AS-\$45
O, OQ	24F-19-I	Florida Laboratory Combo-19 PART I (For Florida Licensees)	12.5	O-\$44 / OQ-\$23.50
O, OQ	24F-19-II	Florida Laboratory Combo-19 PART II (For Florida Licensees)	12	O-\$44 / OQ-\$23.50
O, OQ	H24F-19	Florida Histology Combo-19 (Both PARTS I and II) (Package for Florida Licensees)	24.5	O-\$75 / OQ-\$38 / AS-\$45
O, OQ	H24F-19-I	Florida Histology Combo-19 PART I (For Florida Licensees)	12	O-\$44 / OQ-\$23.50
O, OQ	H24F-19-II	Florida Histology Combo-19 PART II (For Florida Licensees)	5	O-\$44 / OQ-\$23.50
O, OQ	C12F-19	Florida Cytology Combo-19 (For Florida Licensees)	12	O-\$44 / OQ-\$23.50
O	FI019	Florida Initial Licensure Package (HIV)	1	\$10
O	FF019	Florida - First Renewal Package (Medical Errors + HIV)	3	\$18
O, OQ	FM019	Florida Mandatory Course Package (HIV, Med Errors, Laws & Rules)	4	\$25
O, OQ	---	All 2017 Combo Courses are still available, but not listed due to space constraints.	--	See Pricing Above



Continuing Education Unlimited

6231 PGA Blvd, Suite 104 / #306 / Palm Beach Gardens, FL 33418
Phone: 888-423-8462 / Fax: 561-775-4933 / Web: www.4CEUINC.com / Email: Lab@4ceuinc.com

LAB CEU - QUICK PRICE LIST

NOTE | Catalogs do not reflect Sales or Group Discounts. Last Updated: Nov. 26, 2019

COMBO COURSES CONTINUED:

FORMAT	CODE	TITLE	HRS	COST
PHLEBOTOMY COMBOS Catalog Section 8				
O, OQ	6PH-17	6 Hour Phlebotomy Combo-17	6	O-\$30 / OQ-\$15
O, OQ	9PH-17	9 Hour Phlebotomy Combo-17	9	O-\$38 / OQ-\$20
O, OQ	14PH-17	14 Hour Phlebotomy Combo-17	14	O-\$48 / OQ-\$27
O, OQ	6PH-19 & 9PH-19	New Phlebotomy Combos will be available January 2020.	6 or 9	See Above

TEXTBOOKS: [Catalog Section 9](#)

FORMAT	CODE	TITLE	HRS	COST
O	SU028	Laboratory Management Principles & Processes <i>Text with Online Quiz = \$155 + SH OQ Only = \$65</i>	48	See Title + SH
IMPORTANT: This text / course code cannot be used for Florida or Tennessee Supervisor Upgrades. Please order those Upgrade Courses from the appropriate categories (Florida Supervisor Upgrade or Tennessee Supervisor Upgrade) and course codes as shown below.				

SUPERVISOR UPGRADES: [Catalog Section 10](#)

FORMAT	CODE	TITLE	HRS	COST
O, OQ	FSU014	Florida Supervisor Upgrade <i>Text with Online Quiz = \$115 + SH. OQ Only = \$38</i>	25	See Title +SH
O, OQ	FSU-H013	Florida Histology Supervisor Upgrade <i>Text with Online Quiz = \$155 + SH, OQ Only = \$65</i>	48	See Title +SH
O, OQ	TSU013	Tennessee Supervisor Upgrade <i>Text with Online Quiz = \$135 + SH, OQ Only = \$52</i>	37	See Title +SH



Continuing Education Unlimited

6231 PGA Blvd, Suite 104 / #306 / Palm Beach Gardens, FL 33418
Phone: 888-423-8462 / Fax: 561-775-4933 / Web: www.4CEUINC.com / Email: Lab@4ceuinc.com

LAB CEU - QUICK PRICE LIST

NOTE | Catalogs do not reflect Sales or Group Discounts. Last Updated: Nov. 26, 2019

INDIVIDUAL COURSES: [Catalog Section 5](#)

ALERT	CODE	TITLE	HRS	COST	
		BLOOD BANKING (Donor Processing)	Also see the Immunohematology Category		
	BB002	Blood Component Processing, Storage, Special Preparation, and Labelling	2	\$15	
CHEMISTRY					
NEW	C030	Calcium, Phosphate, and Magnesium	3	\$21	
	C024	Classification and Diagnosis of Diabetes	2	\$15	
	C027	Hyperkalemia	2	\$15	
	C026	Hyponatremia	2	\$15	
	C023	Mass Spectrometry and Its Role in Clinical Diagnosis	1	\$10	
IN DEVELOPMENT	C029	Metabolic Alkalosis	TBD	TBD	
	C018	The Steroid Hormone Cascade	2	\$15	
	C021	Thyroid Hormone Excess: Grave's Disease	3	\$21	
NEW	C028	Urine Collection Methods: A Basic Review	2	\$15	
CYTOGENETICS					
- PACKAGE -	CYG009	6 Hour Cytogenetics Package	- PACKAGE -	6	\$32
	CYG003	BRCA Mutations	4	\$28	
NEW	CYG006	Case study: New AML with Difficult Karyotype	2	\$15	
NEW	CYG007	Double Aneuploidy in Down Syndrome	3	\$21	
	CYG003	FISH: An Increasingly Demanded Tool	2	\$15	
NEW	CYG008	Morphological Markers of Chromosomal Instability	1	\$10	
	CYG005	X and Y Chromosomes: A Basic Review	1	\$10	
CYTOLOGY					
	CY015	Basics in Breast Cytology	2.5	\$17.50	
	CY014	Body Fluids: Identifying Benign vs. Malignant Cells	3	\$21	
NEW	CY016	Case Studies in Cytology-19	1	\$10	
	CY013	Review of Normal WBCs	2	\$15	
	CY012	Nasal Cytology in Children	1	\$10	
NEW	CY016	Use of Nasal Cytology in Diagnosing Sinonasal Disorders	2	\$15	
FLORIDA MANDATORY					
NEW	FM-1HIV019	1 Hour HIV/AIDS Review	1	\$10	
NEW	FM-3HIV019	3 Hour HIV/AIDS Review	3	\$21	
UPDATED	LR019	Florida Lab Laws & Rules of the Board	1	\$10	
UPDATED	ME019	Medical Errors and the Laboratory	2	\$15	



Continuing Education Unlimited

6231 PGA Blvd, Suite 104 / #306 / Palm Beach Gardens, FL 33418
Phone: 888-423-8462 / Fax: 561-775-4933 / Web: www.4CEUINC.com / Email: Lab@4ceuinc.com

LAB CEU - QUICK PRICE LIST

NOTE | Catalogs do not reflect Sales or Group Discounts. Last Updated: Nov. 26, 2019

INDIVIDUAL COURSE LIST CONTINUED: [Catalog Section 5](#)

ALERT	CODE	TITLE	HRS	COST
HEMATOLOGY				
	H021	Case Studies in Hematology	2	\$15
NEW	H027	Contact Pathway of Coagulation and Inflammation	2	\$15
	H023	Factor XIII Review	2	\$15
NEW	H019	Heparin Induced Thrombocytopenia	2	\$15
	H022	Myelodysplastic Syndrome	1	\$10
	H026	Overview of Pediatric Hematology	1.5	\$12.50
NEW	H029	Platelets: A Basic Review	1	\$10
NEW	H030	Review of Benzene and the Hematological System	1	\$10
	H019	Stem Cell Basics	2	\$15
	H020	Understanding Components of the CBC	4	\$28
	H025	Understanding Hemostasis and Coagulation Testing	1.5	\$12.50
HISTOLOGY Also see the Immunohistochemistry Category				
	HI035	Artifacts in Histopathology: A Potential Cause of Misinterpretation	2	\$15
	HI033	Estrogen and Cancer: Understanding Estrogen Receptors	1.5	\$12.50
	HI030	Histological Changes of the Placenta in Diabetes	1.5	\$12.50
NEW	HI042	Histological Stains: A Literature Review and Case Study	1	\$10
NEW	HI044	Histology Microtechniques	2	\$15
	HI041	Histology of Normal Tissues	3	\$21
	HI036	Histology Stains: A Historical Review	2	\$15
	HI038	Microwave Assisted Tissue Pathology	1	\$10
	HI037	Mohs Surgery Overview	2	\$15
	HI025	Pathology of Breast Diseases	3	\$21
	HI027	Principles of the Liver Biopsy Procedure	1	\$10
- EXPIRING -	HI026	The Autopsy: Pathology of a Sepsis Related Death	3	\$21
NEW	HI043	The Role of Technical QC in Histology Laboratories	1	\$10
	HI032	Understanding Angiogenesis	1	\$10
	HI022	Unusual Cancers of Childhood – PART I	2	\$15
	HI024	Unusual Cancers of Childhood – PART II	4	\$28
IMMUNOHEMATOLOGY Also see the Blood Banking Category				
	IH015	Blood Safety	2	\$15
	IH018	CASE STUDY: Alloantibody Causing Blood Type Conflict in Pregnant Female	1	\$10
NEW	IH020	Mini Reviews in Hematology-19	1	\$10
	IH016	Risks, Complications, and Reactions Associated with Transfusions	2	\$15
UPDATED	IH019	Transfusion Transmitted Infections	2	\$15



Continuing Education Unlimited

6231 PGA Blvd, Suite 104 / #306 / Palm Beach Gardens, FL 33418
Phone: 888-423-8462 / Fax: 561-775-4933 / Web: www.4CEUINC.com / Email: Lab@4ceuinc.com

LAB CEU - QUICK PRICE LIST

NOTE | Catalogs do not reflect Sales or Group Discounts. Last Updated: Nov. 26, 2019

INDIVIDUAL COURSE LIST CONTINUED: [Catalog Section 5](#)

ALERT	CODE	TITLE	HRS	COST
IMMUNOHISTOCHEMISTRY Also see the Histology Category				
	HI034	Ancillary Techniques in the Histopathologic Diagnosis of Cervical SIL & GIL (2 hrs IHC & 1 hr Molecular)	3	\$21
NEW	IHC006	Antigen Retrieval for Light & Electron Microscopy	3	\$21
NEW	IHC007	Detection Systems in Immunohistochemistry	3	\$21
	HI029	Electron Microscopy of Liver Biopsies	4	\$28
	HI031	Immunohistochemistry for Chronic Hepatitis Diagnosis	1	\$10
	HI040	Immunohistochemistry in Breast Pathology	2	\$15
	HI039	Immunohistochemistry in Cervical Cancer	1	\$10
MANAGEMENT / SUPERVISION				
	SU023	Assay Validations: Make Sure You Do It Right The First Time	1	\$10
	SU019	Basic Quality Control Review	1	\$10
NEW	SU025	CLIA: A Brief Overview	1	\$10
	SU022	Employee Files: Don't Get Lost in the Paperwork	1	\$10
IN DEVELOPMENT	SU026	How to Perform a Root Cause Analysis	TBD	TBD
NEW	SU027	Medical Errors and the Laboratory (Florida Licensees: Complete the course under Florida Mandatory)	2	\$15
NEW	SU024	Proficiency Testing: FAQ Basics	2	\$15
MICROBIOLOGY				
NEW	1HIV019	1 Hour HIV/AIDS Review (Florida Licensees: Complete the course under Florida Mandatory)	1	\$10
NEW	3HIV019	3 Hour HIV/AIDS Review (Florida Licensees: Complete the course under Florida Mandatory)	3	\$21
	M023	Antibiotic Resistance: A Review of the Current Threats	2.5	\$17.50
	M025	Bioterrorism: A Worldwide Threat	2	\$15
	M021	Ebola Review for the Laboratory This course will be temporarily unavailable after 1/1/20 for updating	4	\$28
NEW	M029	Microbiology of Ventilator Associated Pneumonia	2	\$15
	M026	Nocardiosis: Clinical and Pathological Aspects	2	\$15
	M018	People, Pets, and Zoonoses	2	\$15
	M019	Sexually Transmitted Diseases	3	\$21
IN DEVELOPMENT	PKG-M032	Tickborne Illness Package - PACKAGE -	TBD	TBD
IN DEVELOPMENT	M030	Tickborne Illness: Vector Review	TBD	TBD
IN DEVELOPMENT	M031	Tickborne Illness: Disease Review	TBD	TBD
NEW	M028	Understanding Sepsis	2	\$15
	M024	Zika Virus: Update and Overview	1	\$10



Continuing Education Unlimited

6231 PGA Blvd, Suite 104 / #306 / Palm Beach Gardens, FL 33418
Phone: 888-423-8462 / Fax: 561-775-4933 / Web: www.4CEUINC.com / Email: Lab@4ceuinc.com

LAB CEU - QUICK PRICE LIST

NOTE | Catalogs do not reflect Sales or Group Discounts. Last Updated: Nov. 26, 2019

INDIVIDUAL COURSE LIST CONTINUED: [Catalog Section 5](#)

ALERT	CODE	TITLE	HRS	COST
MOLECULAR PATHOLOGY				
	MP007	Genetic Testing: A Basic Review	2	\$15
NEW	MP011	PCR and Infectious Diseases	1	\$10
NEW	MP013	Regulatory Concerns of PCR Carryover Contamination	1	\$10
	MP009	RNA & DNA: A Basic Review	2.5	\$17.50
NEW	MP012	Use of Nucleic Acid Testing in Molecular Diagnostics	2	\$15
	MP008	What is a Genome	2	\$15
PHLEBOTOMY				
	PH007	Blood Composition – Review of Cellular Components	2	\$15
NEW	PH006	Infectious Complications Caused by Phlebotomy	2.5	\$17.50
	PH005	Patient Injuries Caused by Phlebotomy	2.5	\$17.50
	PH004	Preanalytical Errors in Specimen Collection	3.5	\$24.50
	PH003	Specimen Collection: A Basic Review	2	\$15
SAFETY				
- PACKAGE -	PKG-SAF010	12 Hour Bloodborne Pathogens Review (Made up of BBP Series topics)	12	\$44
	SAF001	Biological Safety Cabinets	4	\$28
NEW	SAF003	BBP SERIES: Basic Review of the Pathogens	2	\$15
NEW	SAF004	BBP SERIES: Exposure Control Plan	4	\$28
UPDATED	SAF005	BBP SERIES: Personal Protective Equipment	1	\$10
NEW	SAF006	BBP SERIES: HIV and HBV Research Labs and Production Facilities	1	\$10
NEW	SAF007	BBP SERIES: HBV Vaccination Under the Bloodborne Pathogens Standard	2	\$15
NEW	SAF008	BBP SERIES: Communication of Hazards and Recordkeeping	2	\$15
NEW	SAF009	Hand Hygiene	2.5	\$17.50
IN DEVELOPMENT	SAF011	Latex Allergy in Healthcare	TBD	TBD
SEROLOGY				
	S020	Hepatitis B: Immunity & Prevention Strategies Through Vaccination	4	\$28
	S022	Immune Principles of Vaccination	1.5	\$12.50
NEW	S027	Immunoglobulin Review PART I: Immunoglobulin Structure	1	\$10
NEW	S028	Immunoglobulin Review PART II: Ig Types and Uses	3	\$21
	S021	Introduction to Basic Immunology	2	\$15
NEW	S029	Introduction to Immunology and Immunopathology	2	\$15
	S018	Toxic Epidermal Necrolysis and Stevens-Johnson Syndrome	2	\$15
	S024	Understanding the ABCs of the Immune System	2.5	\$17.50
NEW	S030	Western Blot: A Valuable Immunoassay	3	\$21

----- END OF COURSE LIST -----